

US-40N-1V

Ultrasonic Edge Sensor



- It is suitable for edge tracking application of transparent, opaque and airtight film materials.
- There is no need to adjust the calibration manually.
- With offset display.
- High grade aluminum alloy shell, solid and elegant.



Technical Specifications

Power Source Voltage	10-30VDC
Current Consumption	Max. 30mA
Output Signal	0-5V Analog / 2 x NPN
Response Time	0.5 ms
Sensing Range	6mm
Detection Accuracy	±0.05mm
Carrier/Response Frequency	100KHz/1KHz
Detecting Mode	200K Ultrasound through-beam
Tracking Mode	Edge tracking
Indicator Light / Display	Offset display
Operating Temperature / Humidity	-10~+40C° / 35~85%RH (No freezing and No condensation)
Storage Temperature / Humidity	-10~+50C° / 35~85%RH (No freezing and No condensation)
Protective Category	IP54
Material	Aluminum alloy
Connection Type	M12 5-pin connector

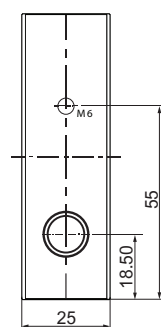
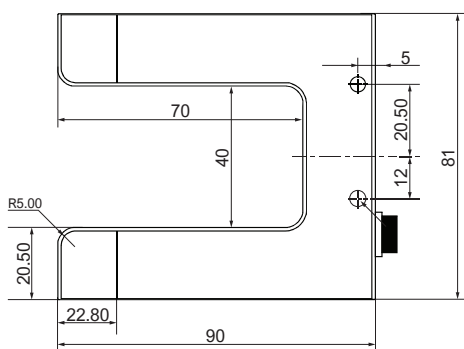
Operation Instructions

There are three state selections for the blind area adjustment function of switching output to meet different detection requirements.

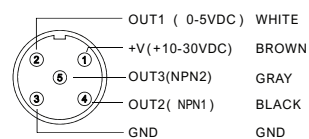
1. Press the "SET" button for 7 seconds until the middle blue light flashes (the blind zone is 0.5mm in this state).
2. Press the "SET" button and two yellow lights flicker (1.0MM in this state).
3. Press the "SET" button and two red lights flicker (2.0MM in this state).
4. After choosing the above three states, press the SET key for 6 seconds to save the exit and finish.

Dimensions

*Unit : mm



5 pins Wiring Diagram



Model Selection

US-40N-1V 0-5V + 2xNPN