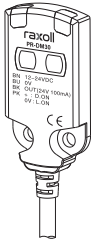


# raxoll

## PR-DM30

### Miniature Photoelectric Sensor



## INSTRUCTION MANUAL

Thank you for choosing **raxoll** miniature photoelectric sensor. Please read the manual before using this product.

- The product should be applied by someone with a certain level of electrical knowledge.
- Please read and make sure that you understand how to operate the product before using it.
- Please keep this manual readily accessible for future reference when needed.

### WARNING

- Please do not exceed maximum rated voltage during usage in order to prevent tester malfunction or fire.
- Please do not apply AC power supply to avoid breakage.
- Please do not subject the product to high temperature to avoid scalding.

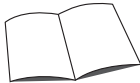
### SAFETY PRECAUTIONS

It is dangerous to wire or attach/remove the connector with the power on. Make sure to turn off the power before operation. Installing in the following places may result in malfunction:

1. A dusty or steamy place.
2. A place generating corrosive gas.
3. A place directly receiving scattering water or oil.
4. A place suffered from heavy vibration or impact.

The product is not designed for outdoor use.  
Do not use the sensor in transient state after power on (approx. 300ms).  
Do not wire with the high voltage cable or the power line.  
Failure to do this will cause malfunction by induction or damage.  
The sensor performance or digital display values may depend on the individual units or the condition of detected product.  
This product is not an explosion-proof construction.  
Do not use the product under flammable, explosive gas or liquid environment.  
Do not use the product in water.  
Do not disassemble, repair or convert the product.  
Failure to do this may cause failure, fire or electric shock.  
Operate within the rated range.

### ACCESSORIES LIST

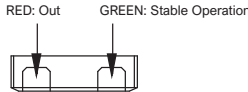


1 PCS INSTRUCTION MANUAL

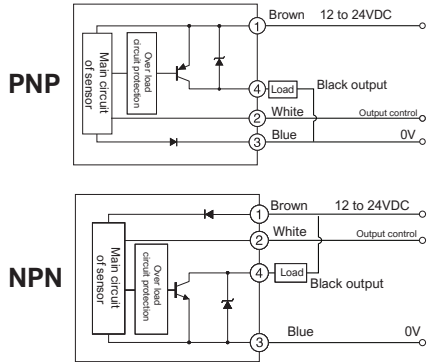
## TECHNICAL SPECIFICATIONS

Model	PNP PR-DM30P	NPN PR-DM30N
Sensing Distance	2-30mm	
Power	24VDC + 10% pulsation less than P.P10%	
Current Consumption	Max. 19mA	
Control Output	PNP/NPN Open collector 50mA/24V or less, Load Current: 50mA or less, Residual Voltage: 2.5V or less	
Response Time	Max. 1ms	
Output Method	Light ON / Dark ON/ Selectable output	
Light Source	Red LED (650nm)	
Spot Diameter	Ø7mm (The distance at 30mm)	
Indicator Light / Display	Out: Red / Stable operation: Green	
Operating Temperature / Humidity	-10~+50°C / 35~85%RH (No freezing and No condensation)	
Storage Temperature / Humidity	-10~+60°C / 35~85%RH (No freezing and No condensation)	
Vibration Resistance	10-55Hz Amplitude 1.5mm 2 hours for each direction of X/Y/Z axis	
Shock Resistance	500 m/s <sup>2</sup> , each 3 times for X/Y/Z axis	
Circuit Protection	Reverse electrode protection, Short-circuit protection	
Protective Category	IP67	
Material	SUS316L, Stainless Steel	
Connection Type	2m Cable	

## INDICATOR / BUTTONS



## OUTPUT CIRCUIT DIAGRAM

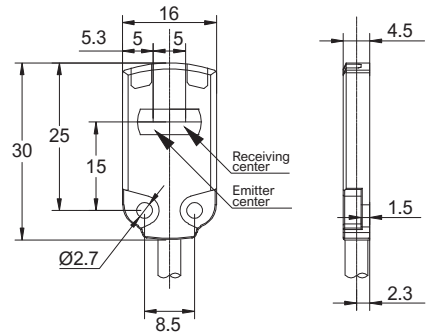


### NOTE

LIGHT-ON Mode >>> White: 12 to 24VDC or not connect  
DARK-ON Mode >>> White: 0V

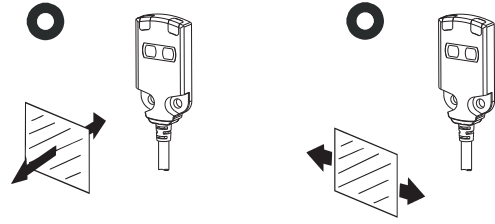
## DIMENSIONS

\*Unit : mm



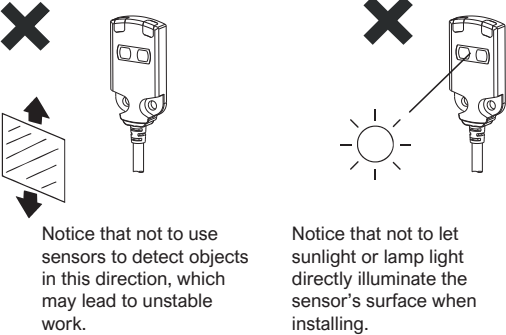
## INSTALLATION

### The way to detect objects correctly



### The wrong way to use the sensor

- Use in direct sunlight
- Used in a place of high humidity or dew
- Use in corrosive gas sites
- The use of vibration or shock energy can be directly transmitted to the sensor site.



### YOU CAN NOTE HERE

## CONTACT US

> [info@raxoll.com](mailto:info@raxoll.com)  
> +90 (232) 457 22 84



PEAK OTOMASYON ELEKTRİK MAKİNA  
İC VE DİS TİC. LTD. STİ.  
Halkapınar Mh. 1376 Sk. No:1/R  
Konak/İZMİR

[raxoll.com](http://raxoll.com)