

PR-CMS11

Color Mark Sensor



- 1.5*7 linear light spot, suitable for different application environment detection.
- The detection distance is 23mm, which is 2-3 times of the detection distance of similar color sensors.
- By adjusting the precision to eliminate the vibration of the detected object, the anti-vibration performance is high.
- When detecting the edge of the object or the critical position of two different colors, the detection is stable and reliable.
- With two detection modes of color mark sensor, the performance is greatly superior to the ordinary color mark.
- Two point setting, simple and convenient, small size, suitable for different spaces.

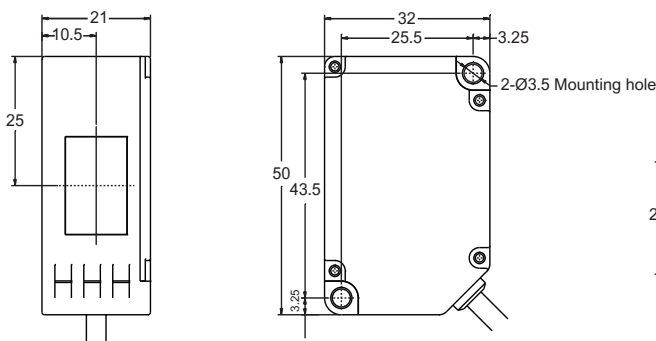


Technical Specifications

Power Source Voltage	24VDC + 10% pulsation less than P-P10%	
Current Consumption	Less than 850mW (Power voltage is 24V, the current consumption is below 35mA)	
Output	PNP/NPN Open controller transistor, Maximum out*/inflow** current: 50mA The applied voltage is below 30VDC(between output and +V*/0V**) Residual voltage: 1.5V or less(At 50mA load current) *:PNP / **:NPN	
Response Time	Below 200μs	
Detection Distance	23mm	
Mode Switching Input	Mark Mode	*Low (OFF) 0 to 0.6VDC or open / **Low (ON) 0 to 0.6VDC Outflow current below 0.5mA Input impedance about 10kΩ *:PNP / **:NPN
	Color Mode	*High (ON) 12 to +VDC Outflow current below 3mA Input impedance about 10kΩ **High (OFF) 12 to +VDC or open *:PNP / **:NPN
Spot Dimension	1.5*7 (The distance at 23mm)	
Light Source	Red / Green / Blue composite LED (Wave peak/wavelength: 640nm / 525nm / 470nm)	
Light Source	Mark Mode	Mark output ON
	Color Mode	Color matching ON
Operating Temperature / Humidity	-10~+55°C / 35~85%RH (No freezing and No condensation)	
Storage Temperature / Humidity	+20~+70°C / 35~85%RH (No freezing and No condensation)	
Circuit Protection	Short-circuit protection equipped (automatic recovery)	
Material	Cage: PBT - Operation Panel: PC - Operation Button: Silica Gel - Lens: PC	
Connection Type	2m Cable	
Weight	About 110g	

Dimensions

*Unit : mm



Model Selection

PR-CMS11P	PNP
PR-CMS11N	NPN